

WATERSHED PRIORITY MAP

Dist-Washim, Taluka-Malegaon (PTK-3/06/02)

77°4'30"E

77°5'0"E

77°5'30"E

77°6'0"E

20°14'0"N

20°13'30"N

20°13'0"N

20°12'30"N

20°12'0"N

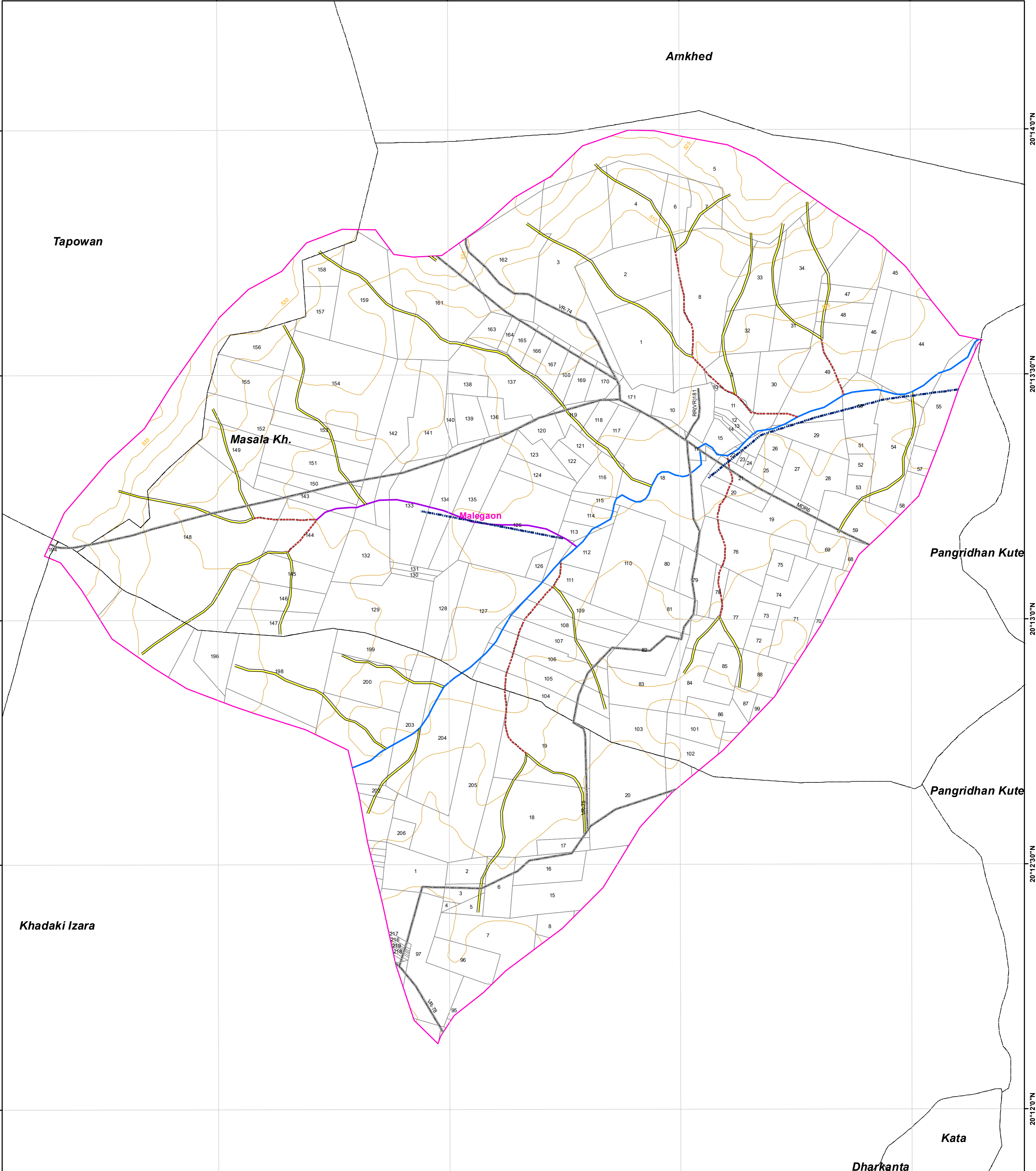
20°14'0"N

20°13'30"N

20°13'0"N

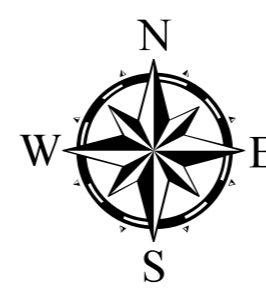
20°12'30"N

20°12'0"N



Legend

- 5 Meter Contour
- Lineaments
- Road
- Drainage Line Treatment Zone**
- 1st Order
- 2nd Order
- 3rd Order
- 4th & Above Drainage Order
- Watershed_Boundary
- Survey/Gat No Boundary
- Villages Boundary



1:7,000

AISLUS CODE- **5C4C3b6b**

Area in Ha- **642.08**

For Official Use Only

Paper Size- A1

MAHARASHTRA STATE



Field work should be done after actual site inspection as per the department's guidelines