

# WATERSHED PRIORITY MAP

Dist-Washim, Taluka-Malegaon (PTK-3/02/06)

77°4'0"E 77°4'30"E 77°5'0"E 77°5'30"E

20°20'0"N

20°20'0"N

20°19'30"N

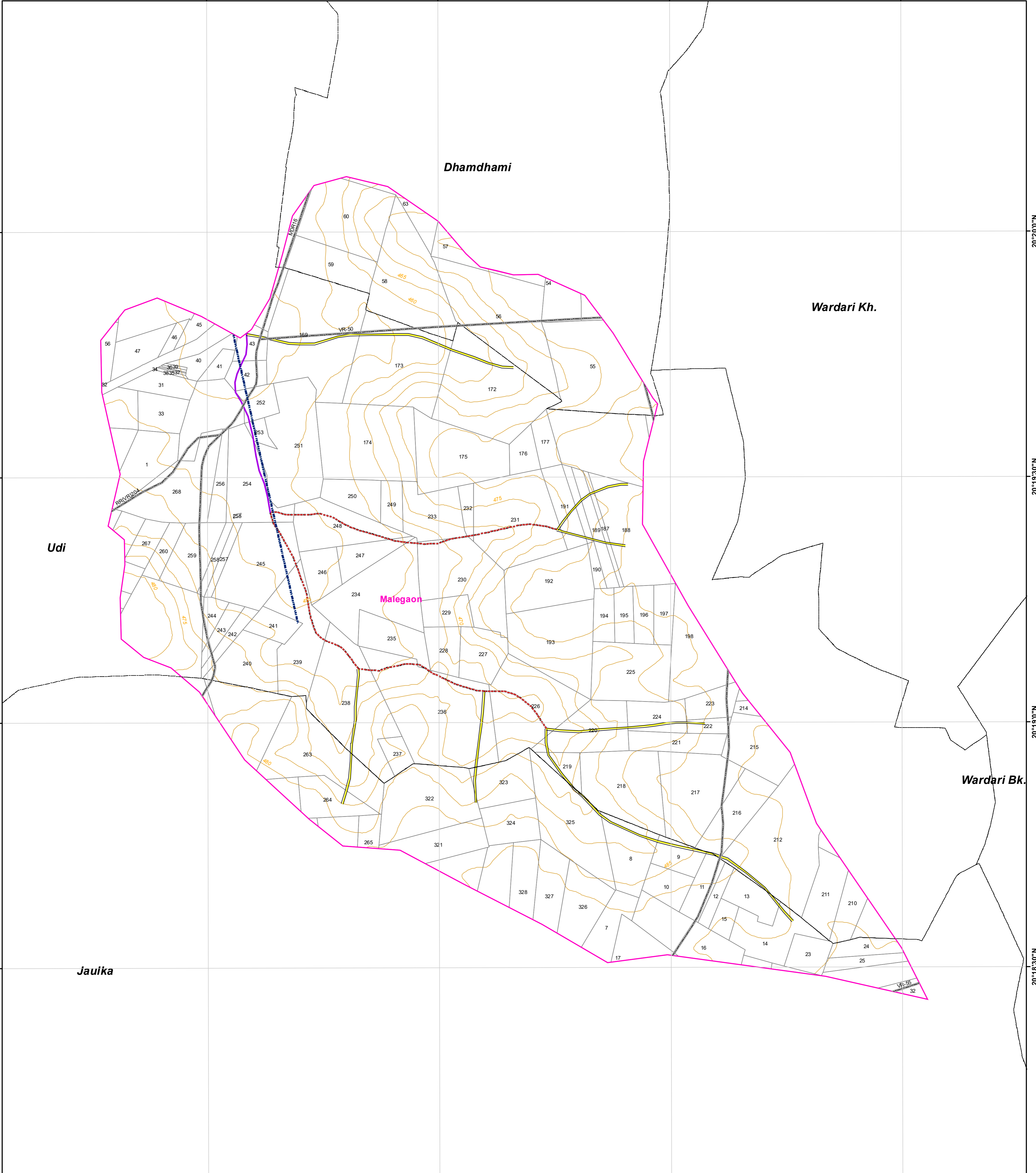
20°19'30"N

20°19'0"N

20°19'0"N

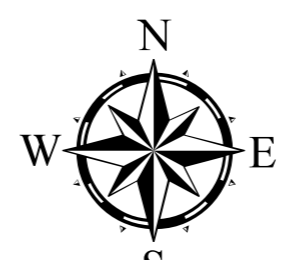
20°18'30"N

20°18'30"N



## Legend

- 5 Meter Contour
- Lineaments
- Road
- Drainage Line Treatment Zone**
  - 1st Order
  - 2nd Order
  - 3rd Order
  - 4th & Above Drainage Order
- Watershed\_Boundary
- Survey/Gat No Boundary
- Villages Boundary



1:7,000

AISLUS CODE- **5C4C3b2f**  
 Area in Ha- **507.11**

*For Official Use Only*  
*Paper Size- A1*

## MAHARASHTRA STATE



*Field work should be done after actual site inspection as per the department's guidelines*