

WATERSHED PRIORITY MAP

Dist-Satara, Taluka-Satara (KR-13/01/02)

74°1'0"E

74°1'30"E

74°2'0"E

17°41'0"N

17°41'0"N

17°40'30"N

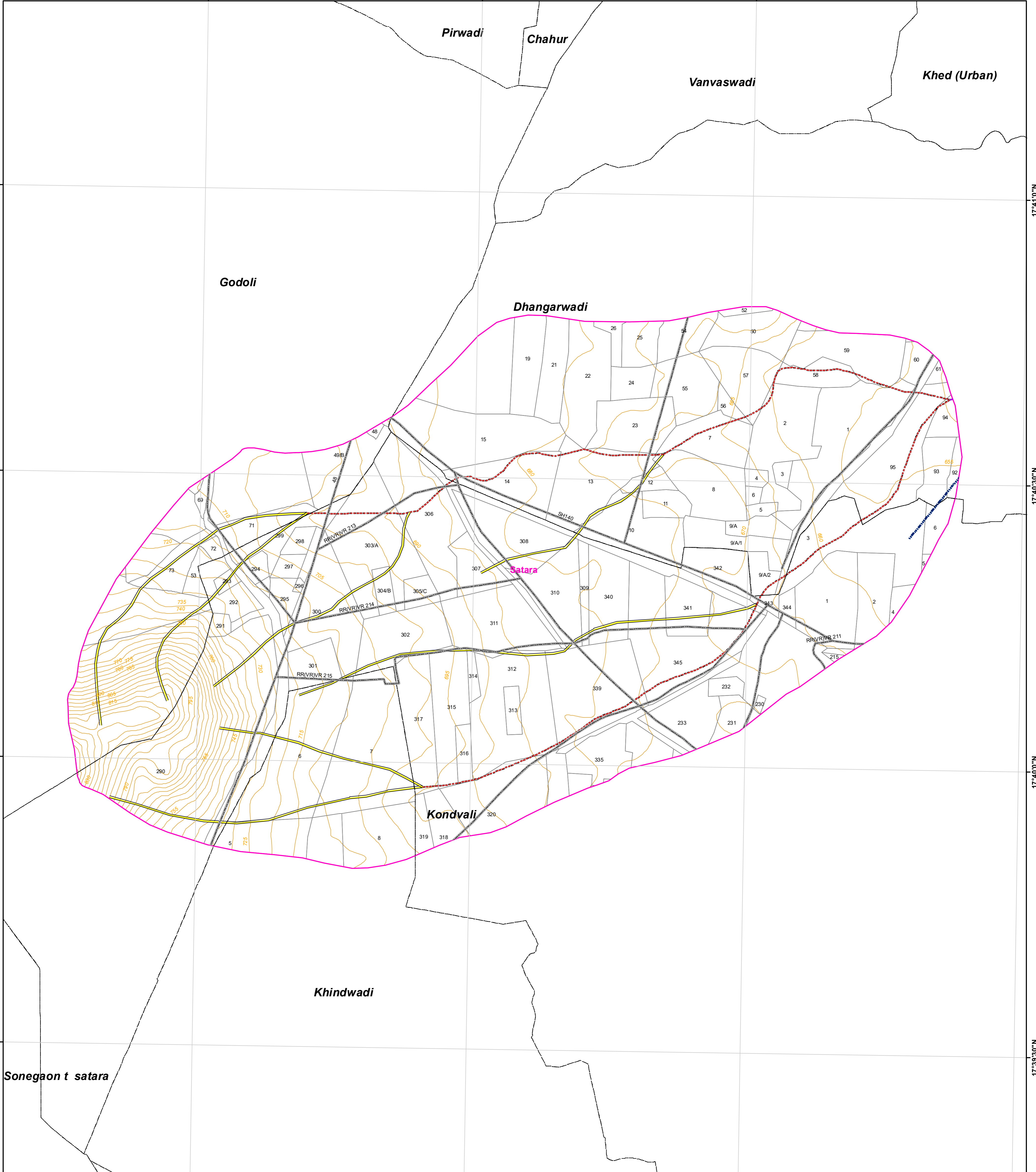
17°40'30"N

17°40'0"N

17°40'0"N

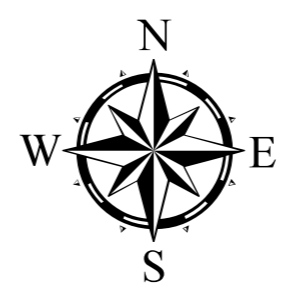
17°39'30"N

17°39'30"N



Legend

- 5 Meter Contour
- Lineaments
- Road
- Drainage Line Treatment Zone**
 - 1st Order
 - 2 nd Order
 - 3 rd Order
 - 4 th & Above Drainage Order
- Watershed_Boundary
- Survey/Gat No Boundary
- Villages Boundary



1:6,000

AISLUS CODE- **4D7H8h1b**

Area in Ha- **354.88**

For Official Use Only
Paper Size- A1

MAHARASHTRA STATE



Field work should be done after actual site inspection as per the department's guidelines