

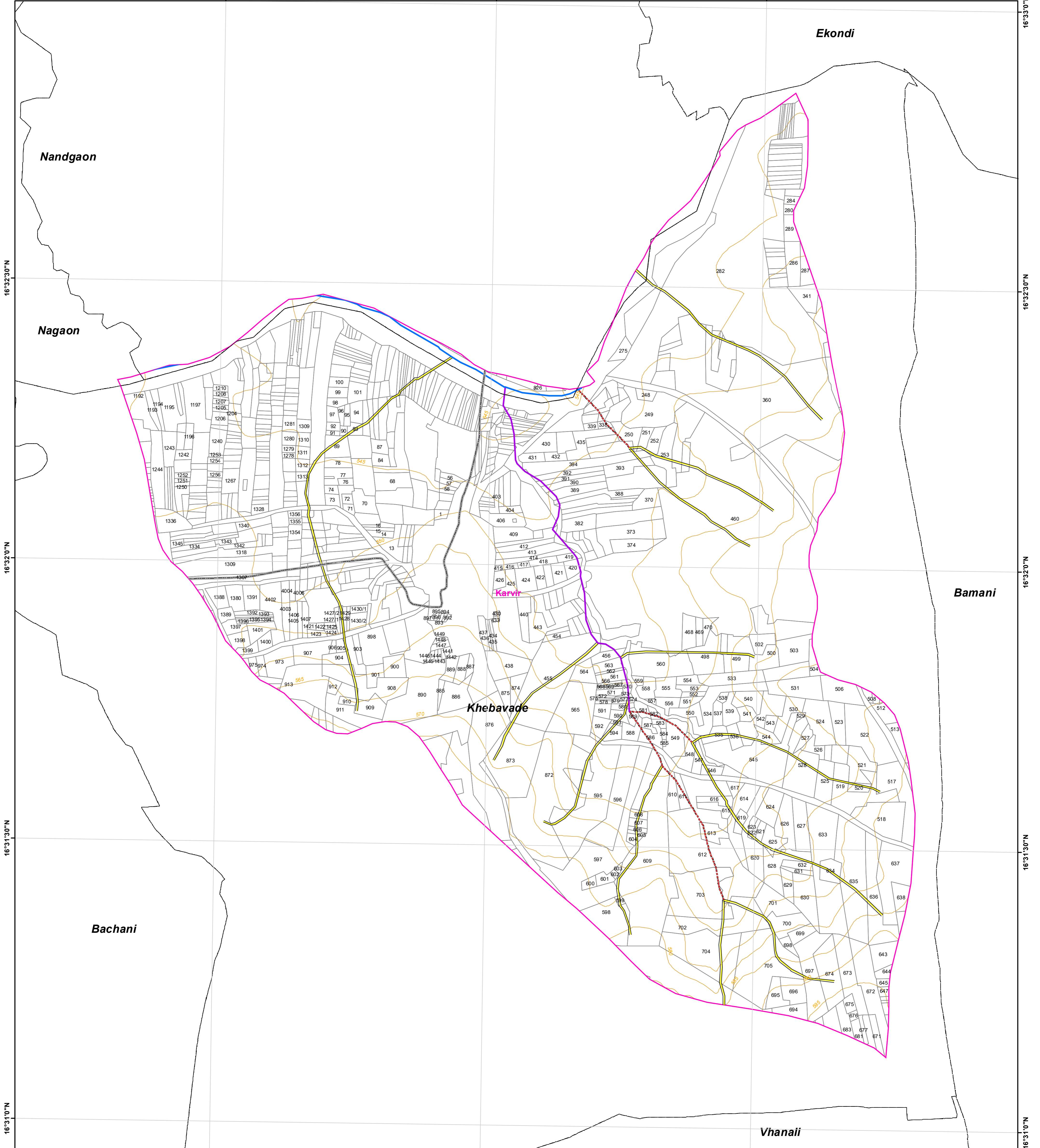
# WATERSHED PRIORITY MAP

Dist-Kolhapur, Taluka-Karvir (KR-66/03/09)

74°12'30"E

74°13'0"E

74°13'30"E



**Legend**

- 5 Meter Contour
- Lineaments
- Road
- Drainage Line Treatment Zone**
- 1st Order
- 2nd Order
- 3rd Order
- 4th & Above Drainage Order
- Watershed\_Boundary
- Survey/Gat No Boundary
- Villages Boundary

North Arrow

Scale: 1:6,000

Area in Ha- **420.27**

For Official Use Only  
Paper Size- A1

**MAHARASHTRA STATE**

Field work should be done after actual site inspection as per the department's guidelines