

WATERSHED PRIORITY MAP

Dist-Hingoli, Taluka-Sengaoon (PPG-1/04/08)

76°56'0"E

76°56'30"E

76°57'0"E

76°57'30"E

19°45'0"N

19°44'30"N

19°44'0"N

19°43'30"N

19°43'0"N

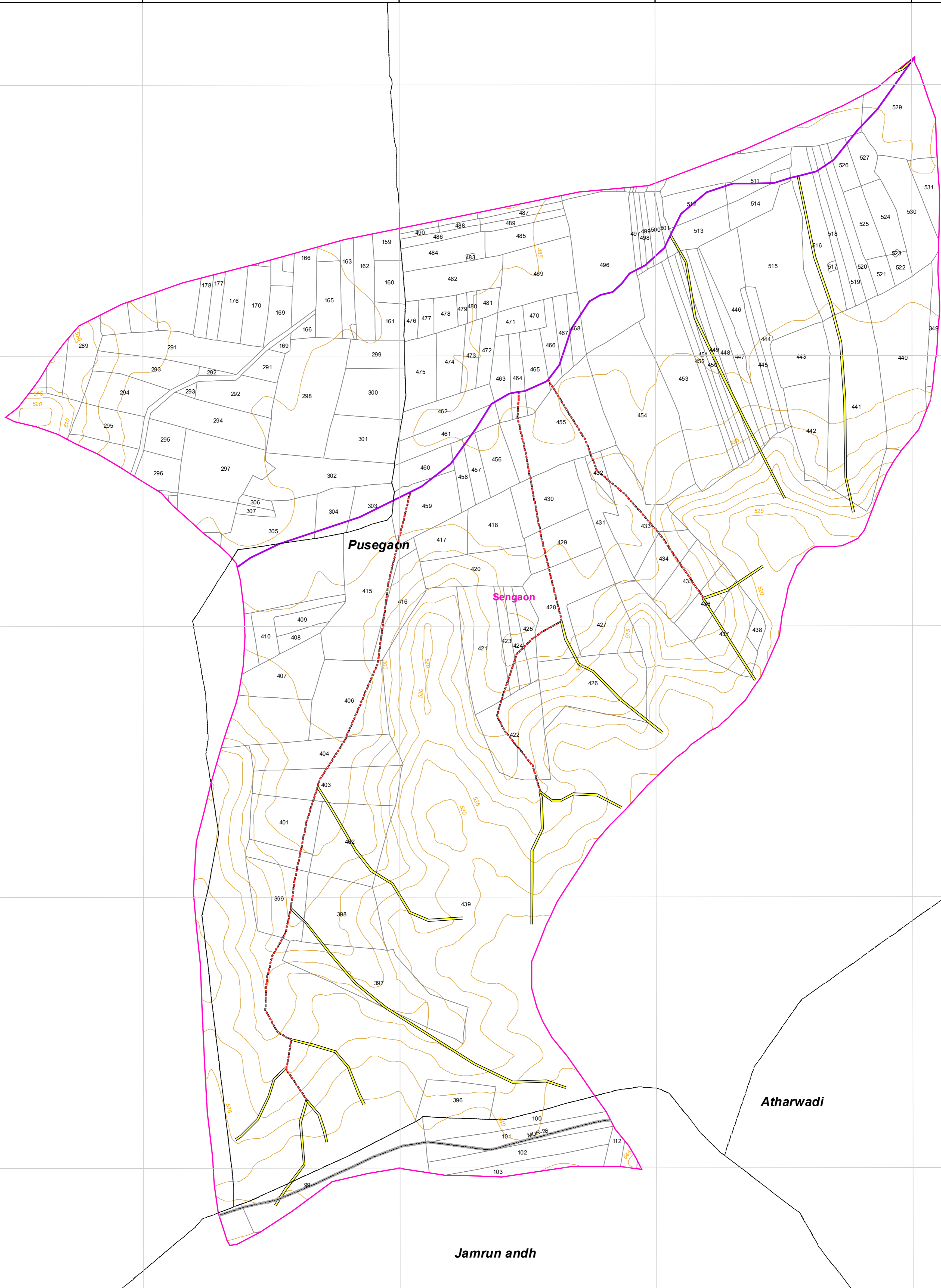
19°45'0"N

19°44'30"N

19°44'0"N

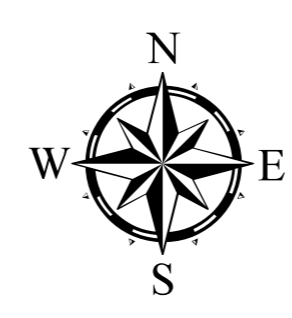
19°43'30"N

19°43'0"N



Legend

- 5 Meter Contour
- Lineaments
- Road
- Drainage Line Treatment Zone**
- 1st Order
- 2nd Order
- 3rd Order
- 4th & Above Drainage Order
- Watershed_Boundary
- Survey/Gat No Boundary
- Villages Boundary



1:7,000

AISLUS CODE- **4E4F3a4h**
 Area in Ha- **648.92**

For Official Use Only
 Paper Size- A1

MAHARASHTRA STATE



Field work should be done after actual site inspection as per the department's guidelines